



DIGITAL RADIOGRAPHY

CXDI- ELITE

420C FIXED

The Digital Radiography System with improved sensitivity and resolution allows for quick upgrade of your existing radiography equipment and fits easily into most universal Bucky systems. CXDI-420C Fixed is also compatible with Built-in AEC assist and Intelligent NR.

Canon

Intelligent **NR**

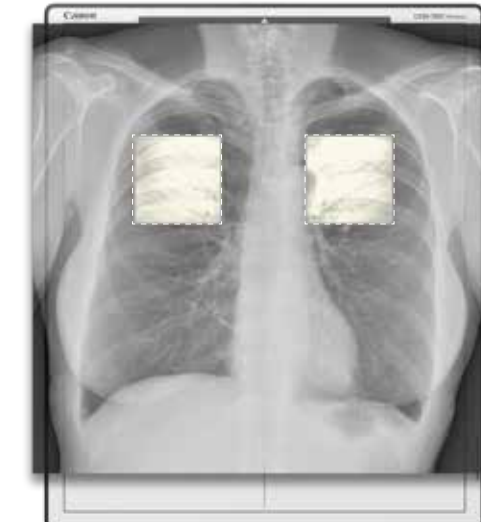
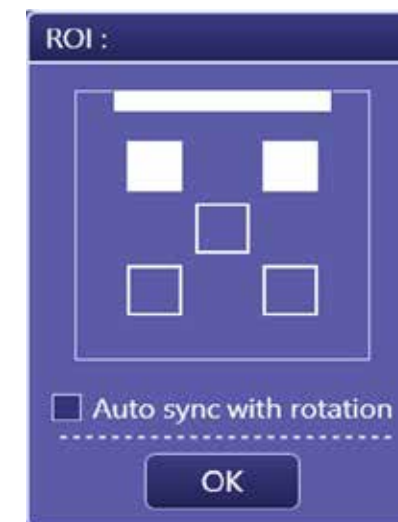
DEEP LEARNING

- Intelligent noise reduction
- Improved image quality
- Dose benefit
- Assists diagnosis



Built-in AEC Assistance

- Optimize x-ray dose without external AEC sensor
- Ideal for free positioning
- Auto ROI selection by rotation
- Different ROI patterns can be selected



DETECTOR SHARING (SHARABLE ACROSS SYSTEMS)

- Expanded with additional Canon FPD's like our premium wireless FPD
- Running with the same CXDI Control Software NE platform.



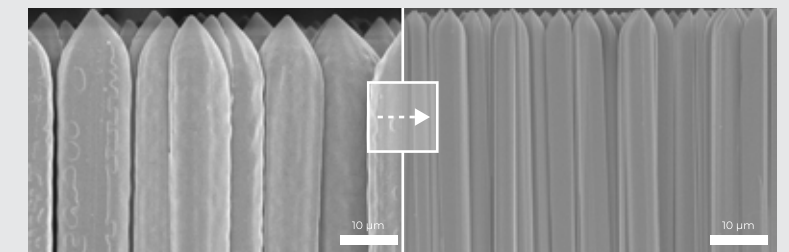
EASY STREAMLINED UPGRADES

- Fits easily into standard 46 x 46 cm bucky
- Retrofitted into a range of radiography devices, such as upright stands and tables.



CXDI CONTROL SOFTWARE NE

- Optimized workflow
- Body parts and customer specific image processing
- Secure
- Optional features like Scatter Correction, Intelligent NR, Built-in AEC assistance etc.



EXCELLENT DQE AND MTF

- Thin and clean CsI pillar crystals can provide sharper images with both high DQE and MTF value
- DQE Typical 74% (0 lp/mm)
- MTF Typical larger than 45% (2 lp/mm)

CXDI-420C FIXED SPECIFICATIONS¹

CXDI-420C Fixed

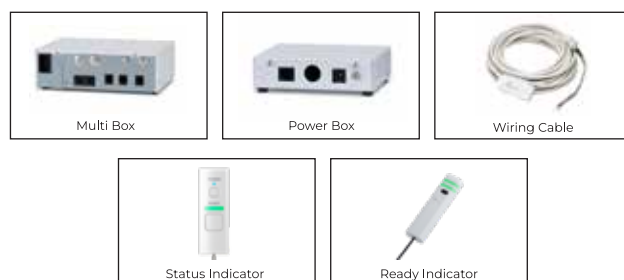


| | |
|-------------------------|--|
| Purpose: | General Radiography |
| Scintillator: | CsI (Cesium Iodide) |
| Weight (incl. battery): | 6.1 kg (excl. cable) |
| Effective imaging area: | 43 x 43 cm |
| External dimensions: | 46 x 46 cm |
| Image matrix size: | 3408 x 3408 pixels |
| Pixel size: | 125 µm |
| Resolution: | 4.0 lp/mm |
| DQE: | Typical 74% (0 lp/mm) / 67% (0.5 lp/mm) ² |
| Grey scale: | A/D: 16bit |
| Preview image time: | 1 sec. ³ |
| Cycle time: | 4 sec. ³ |

¹Specifications subject to change.

²0 lp/mm is extrapolated value IEC62220-1-1 2015 (RQA5).

³Dependent on acquisition mode.



Canon

CANON MEDICAL COMPONENTS EUROPE B.V.

Bovenkerkerweg 59, 1185 XB, Amstelveen, Netherlands

© 2023 CANON MEDICAL COMPONENTS EUROPE B.V.

All rights reserved. All products and names mentioned are the property of their respective owners. While Canon has made every effort at the time of publication to ensure the accuracy of the information provided herein, product specifications, configurations, prices, system/component/options availability are all subject to change without notice. When used for medical imaging applications, the customer assumes full responsibility and liability to determine suitability for use as well as responsibility for documentation and testing to comply with relevant medical device standards. Canon assumes no liability for such applications.

420F 012025 V2